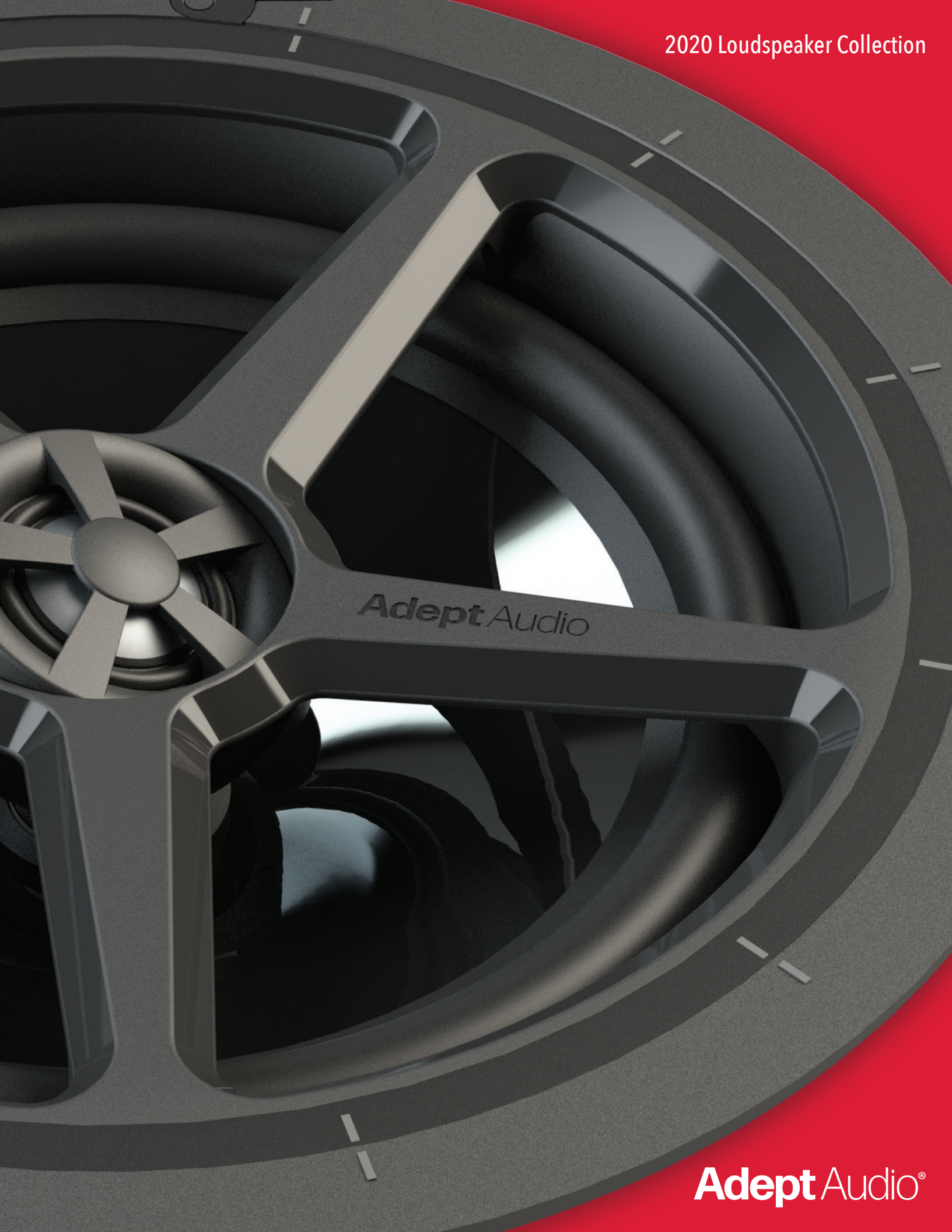


2020 Loudspeaker Collection



Adept Audio

Adept Audio®



Adept Audio is a new brand of great sounding, good looking and easy to Install architectural speakers purpose-built for Residential and Commercial Security Dealers who install sound systems.

Engineered for demanding high-resolution audio streams and hi-res A/V systems, Adept Audio delivers clear dialogue, precise dynamics and considerably higher volume levels than wireless systems.

In addition, our timbre-matched sonic signature allows you to design systems that gives the flexibility to mix and match without compromising your system design approach. All thanks to our engineering team with over four decades of designing and voicing speakers.

Adept Audio has created a unique design look that runs throughout our product lines. Simply stated, we believe your customers will love our exquisite, high-gloss design cues that visually communicates that our products are in every way exceptional. We believe that our design approach will help bring down barriers to your customer's purchasing decision.

In addition, our speakers are engineered to save installation time. For example, our included Trim Ring™ offers the industry's simplest mounting system – all you will need to do is just push-up-twist-click-and-lock! The tool free trim-out is super helpful, allowing you to focus on the job at hand when balancing up high on a ladder.

With Adept Audio's world-class website and our sonic signature complimented by our design cues, we're confident that when you recommend Adept Audio, your customers will come to realize that Adept is what they really want.

Please take a look, but more importantly, listen to our stuff. We think you'll like what you see and we know that you will love what you hear.

Thanks for listening,

A handwritten signature in cursive script that reads "Keith Marshall".

Keith Marshall
President
951.288.0945

Adept Audio®

Innovation - Sonic Performance - Integrity





SURFACE. SOUND.





UP. TWIST. CLICK. LOCK.

CEILING SPEAKERS

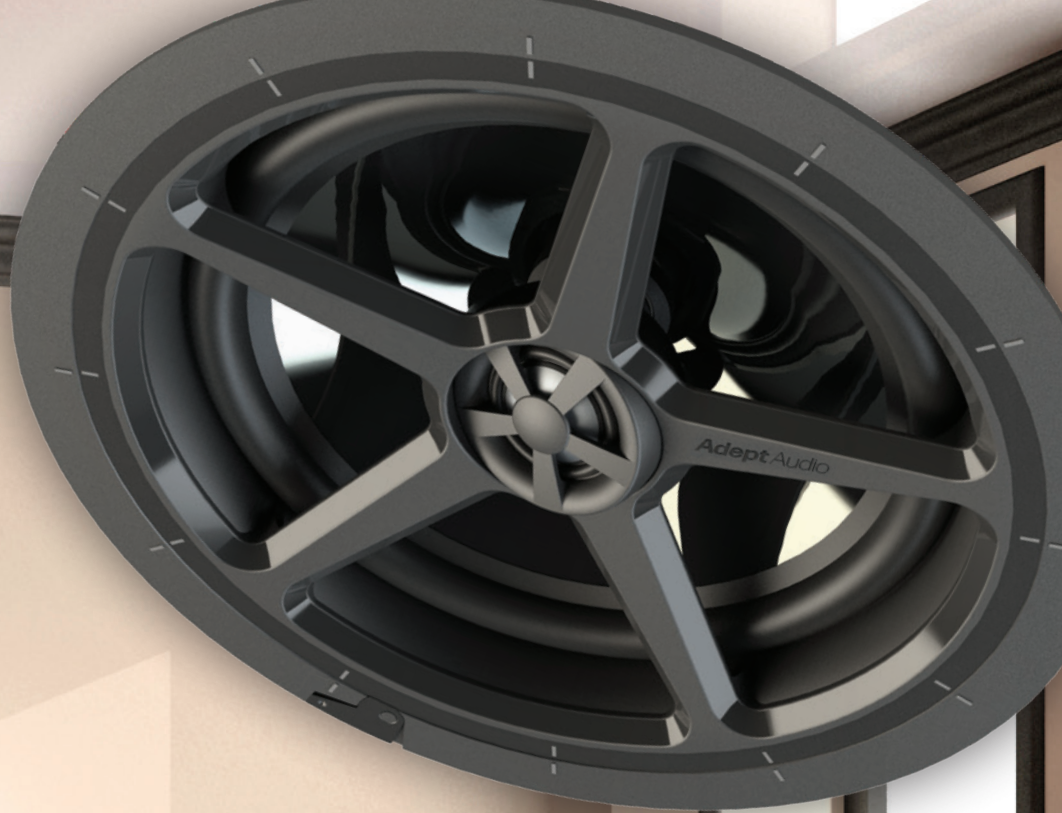
We designed Adept Audio ceiling speakers to deliver everything an installer might want: easy installation, rock-solid reliability, great looks and outstanding sound.

Our "Trim-Ring" mounting system lets installers mount our speakers in a matter of seconds, with nothing but their fingers – no tools required!

Our architectural speakers are built to sound great and keep on sounding excellent years down the road. In fact, that's why we offer a Lifetime Warranty.

With six standard in-ceiling models for whole-house sound systems and three LCR ceiling speakers for home theaters, there's an Adept Audio speaker to suit any budget and any size of room.





WHOLE HOUSE

Our IC86 is one of our flagship speakers. Our architectural speaker engineers put their best into this 8" speaker, featuring a graphite woofer and 1" aluminum tweeter. It delivers even response across the entire frequency spectrum so every kick drum, high note & cymbal crash rings out rich and true. And since our entire line is timbre matched, it allows mixing and matching with any of our other speakers.



IC86

8" Ceiling Speakers

Our top-of-the-line speaker delivers subtly stronger treble, increased bass response and natural sound.

- 8" Injection-Molded Graphite (IMG) Woofers
- 1" Pivoting Aluminum-Dome Tweeters
- Power Handling: 175 Watts
- Frequency Response: 38Hz-20kHz
- Sensitivity: 92dB SPL, 1W/1m (3.3 ft)
- Impedance: 6Ω
- Cut-Out Diameter: 8¾"
- Grille (outside) Diameter: 10"
- Mounting Depth: 4"
- Warranty: Limited Lifetime

U/M: Pair

The IC82 has exceptionally present bass and jams on hip-hop, rock & R&B music. This 8" speaker sounds especially vivid and has an open midrange that delivers natural-sounding voices so you hear more of the singer than the speaker. The easy to use Trim Ring™ allows you to compare both in minutes.



IC82

8" Ceiling Speakers

Strong bass output makes hip-hop, rock and R&B music sound especially exciting and vivid.

- 8" Polypropylene Woofers
- 1" Pivoting Silk-Dome Tweeters
- Power Handling: 150 Watts
- Frequency Response: 40Hz-20kHz
- Sensitivity: 93dB SPL, 1W/1m (3.3 ft)
- Impedance: 6Ω
- Cut-Out Diameter: 8¾"
- Grille (outside) Diameter: 10"
- Mounting Depth: 4"
- Warranty: Limited Lifetime

U/M: Pair



IC66

6½" Ceiling Speakers

Delivers smooth response everywhere, with textbook flat response that doesn't color the sound artificially.

- 6½" Injection-Molded Graphite (IMG) Woofers
- 1" Pivoting Aluminum-Dome Tweeters
- Power Handling: 125 Watts
- Frequency Response: 48Hz-20kHz
- Sensitivity: 92dB SPL, 1W/1m (3.3 ft)
- Impedance: 6Ω
- Cut-Out Diameter: 8¾"
- Grille (outside) Diameter: 10"
- Mounting Depth: 3½"
- Warranty: Limited Lifetime

U/M: Pair



IC64

6½" Ceiling Speakers

A great step up model for distributed audio applications providing rich bass & highs.

- 6½" Injection-Molded Polypropylene (IMPP) Woofers
- 1" Pivoting Teteron-Dome Tweeters
- Power Handling: 100 Watts
- Frequency Response: 50Hz-20kHz
- Sensitivity: 92dB SPL, 1W/1m (3.3 ft)
- Impedance: 6Ω
- Cut-Out Diameter: 8¾"
- Grille (outside) Diameter: 10"
- Mounting Depth: 3⅝"
- Warranty: Limited Lifetime

U/M: Pair



IC62

6½" Ceiling Speakers

A great solution for secondary locations, such as that extra bedroom or guest bath.

- 6½" Polypropylene Woofers
- 1" Pivoting Silk-Dome Tweeters
- Power Handling: 85 Watts
- Frequency Response: 55Hz-20kHz
- Sensitivity: 91dB SPL, 1W/1m (3.3 ft)
- Impedance: 6Ω
- Cut-Out Diameter: 8¾"
- Grille (outside) Diameter: 10"
- Mounting Depth: 3⅝"
- Warranty: Limited Lifetime

U/M: Pair



IC62TT

6½" Twin Tweeter Ceiling Speaker

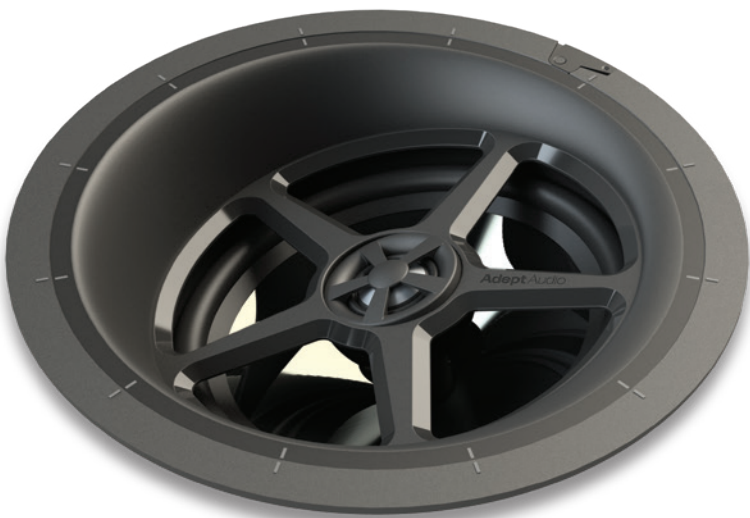
A single point solution that delivers stereo sound in a less than optimum in-ceiling application.

- 6½" Polypropylene Woofer
- Dual 1" Fixed Silk-Dome Tweeters
- Power Handling: 80 Watts
- Frequency Response: 50Hz-20kHz
- Sensitivity: 93dB SPL, 1W/1m (3.3 ft)
- Impedance 6Ω
- Cut-Out Diameter: 8¾"
- Grille (outside) Diameter: 10"
- Mounting Depth: 3⅝"
- Warranty: Limited Lifetime

U/M: Pair

HOME THEATER

Our flagship ICLCR86 delivers high-impact and our no-compromise 8" graphite woofer fills rooms with awesome, powerful bottom end bass. This is the perfect speaker for those customers who demand maximum performance. Use the ICLCR86 for the left, center and right and for sides and rears. The ICLCR speakers are angled so you can point it directly toward the sweet listening spot – and then dial in the pivoting tweeter for optimum results.



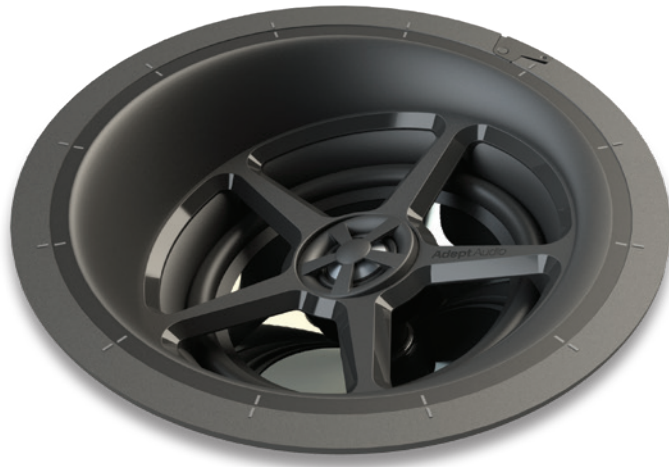
ICLCR86

8" Ceiling LCR Home Theater Speaker

The 8-inch angled woofer gives a dynamic bass response and is perfect for any large Home Theater.

- Woofer & Tweeter Bridge Fixed at 15° Angle
- 8" Injection-Molded Graphite (IMG) Woofer
- 1" Pivoting Aluminum-Dome Tweeter
- Power Handling: 175 Watts
- Frequency Response: 38Hz-20kHz
- Sensitivity: 92dB SPL, 1W/1m (3.3 ft)
- Impedance: 6Ω
- Cut-Out Diameter: 8¾"
- Grille (outside) Diameter: 10"
- Mounting Depth: 4⅞"
- Warranty: Limited Lifetime

U/M: Each



ICLCR66

6½" Ceiling LCR Home Theater Speaker

The graphite woofer delivers tight bass response and aluminum dome tweeter drives crisp high frequencies.

- Woofer & Tweeter Bridge Fixed at 15° Angle
- 6½" Injection-Molded Graphite (IMG) Woofer
- 1" Pivoting Aluminum-Dome Tweeter
- Power Handling: 125 Watts
- Frequency Response: 45Hz-20kHz
- Sensitivity: 93dB SPL, 1W/1m (3.3 ft)
- Impedance: 6Ω
- Cut-Out Diameter: 8¾"
- Grille (outside) Diameter: 10"
- Mounting Depth: 4¾"
- Warranty: Limited Lifetime

U/M: Each



ICLCR62

6½" Ceiling LCR Home Theater Speaker

Great for most home theater applications, the angled design delivers optimum listening performance.

- Woofer & Tweeter Bridge Fixed at 15° Angle
- 6½" Polypropylene Woofer
- 1" Pivoting Silk-Dome Tweeter
- Power Handling: 100 Watts
- Frequency Response: 50Hz-20Hz
- Sensitivity: 91dB SPL, 1W/1m (3.3 ft)
- Impedance: 6Ω
- Cut-Out Diameter: 8¾"
- Grille (outside) Diameter: 10"
- Mounting Depth: 4¾"
- Warranty: Limited Lifetime

U/M: Each



IWLCR66

Dual Woofer 6½" In Wall LCR Home Theater Speaker

A champion at tonal matching, superior vertical dispersion makes mounting height less critical in vertical applications.

- Dual 6½" Injection-Molded Graphite (IMG) Woofers
- 1" Pivoting Aluminum-Dome Tweeter
- Power Handling: 125 Watts
- Frequency Response: 50Hz-20kHz
- Sensitivity: 90dB SPL, 1W/1m (3.3 ft)
- Impedance: 8Ω
- Cut-Out Dimensions: H 6⅝" x W 14⅜"
- Grille (outside) Dimensions: H 7⅞" x W 15⅝"
- Mounting Depth: 3⅞"
- Warranty: Limited Lifetime

U/M: Each



IWLCR56

Dual Woofer 5" In Wall LCR Home Theater Speaker

Offers a very smooth balance from bass and mid ranges to treble, great for movie applications.

- Dual 5" Injection-Molded Graphite (IMG) Woofers
- 1" Pivoting Aluminum-Dome Tweeter
- Power Handling: 100 Watts
- Frequency Response: 60Hz-20kHz
- Sensitivity: 90dB SPL, 1W/1m (3.3 ft)
- Impedance: 8Ω
- Cut-Out Dimensions: H 6⅝" x W 14⅜"
- Grille (outside) Dimensions: H 7⅞" x W 15⅝"
- Mounting Depth: 3⅞"
- Warranty: Limited Lifetime

U/M: Each

TOUGH AND AGILE

The IW62 is one of our favorite sounding speakers – you may suggest using them for foreground listening and can sound great anywhere you install them. They can handle all genres of music and are affordable enough to use in most every project. Like our other speakers, the IW62 is timbre-matched so they can be used with other Adept speakers and they will all sound really good together. Easy installation and sweet neutral sound make the IW62 an excellent In Wall solution.



IW62

6½" In Wall Speakers

Delivers vivid sound no matter if mounted up near the ceiling or lower down at sitting listening level.

- 6½" Polypropylene Woofers
- 1" Pivoting Silk-Dome Tweeters
- Power Handling: 150 Watts
- Frequency Response: 45Hz-20kHz
- Sensitivity: 90dB SPL, 1W/1m (3.3 ft)
- Impedance: 6Ω
- Cut-Out Dimensions: H 11⅛" x W 7⅞"
- Grille (outside) Dimensions: H 12⅞" x W 8⅝"
- Mounting Depth: 3⅞"
- Warranty: Limited Lifetime

U/M: Pair



DEEP. STIRRING. BASS.

DUAL-WOOFER DIGITAL SUBWOOFERS

Every system sounds better if you stir in a little more bass. Or even better, a lot more bass! Adept Audio's subwoofers can handle all the bottom-end bass you throw at them.

Each of our floor standing digital subwoofers feature rugged, long-throw, forward-firing woofers. And, all of our subs also feature down-firing passive radiators that add more bass fill into the room, delivering the most bass from the smallest space without breathing issues that ported subs can have. And with our digital-drive amplifiers, rise time is super fast and accurate, especially in movie special effects and critical bass notes in music.





OUR FLAGSHIP DUAL-DRIVE SUBWOOFER: CLEAN, ACCURATE, POWERFUL

Adept Audio's Dual-Drive Digital Subwoofers can take all the bottom end that you can throw at them.

Adept's flagship ADS12 is our 300 watt sub, with a massive 12-inch treated paper cone woofer and 12-inch passive radiator, which can meet the demands of most any large home theater installation.



ADS12

12" Powered Subwoofer

The 12-inch dual woofer design offers big impact & ideal for large Home Theater applications.

- Active Driver: 12" Front-Firing Treated Paper Woofer
- Passive Radiator: 12" Down-Firing Woofer
- Digital Amp: 300 Watts RMS / 500 Watts Peak
- Frequency Response: 21Hz-200Hz
- Subwoofer Output: 101dB SPL
- Dimensions: W 14¾" x H 15½" x D 16¾"
- Power: Auto On/Off, 5V USB
- Finish: Black Vinyl Cabinet
- Warranty: Limited 2-Year

U/M: Each



ADS10

10" Powered Subwoofer

Adept's most popular home theater sub with dual woofer technology for broad low frequency spectrum coverage.

- Active Driver: 10" Front-Firing Treated Paper Woofer
- Passive Radiator: 10" Down-Firing Woofer
- Digital Amp: 200 Watts RMS / 350 Watts Peak
- Frequency Response: 28Hz-250Hz
- Subwoofer Output: 99dB SPL
- Dimensions: W 13¼" x H 14⅞" x D 15¼"
- Power: Auto On/Off, 5V USB
- Finish: Black Vinyl Cabinet
- Warranty: Limited 2-Year

U/M: Each



ADS8

8" Powered Subwoofer

The ADS8 is great for moderate to small sized home theater system needing extra low punch.

- Active Driver: 8" Front-Firing Treated Paper Woofer
- Passive Radiator: 8" Down-Firing Woofer
- Digital Amp: 180 Watts RMS / 320 Watts Peak
- Frequency Response: 32Hz-250Hz
- Subwoofer Output: 95dB SPL
- Dimensions: W 11¾" x H 12⅝" x D 13⅝"
- Power: Auto On/Off, 5V USB
- Finish: Black Vinyl Cabinet
- Warranty: Limited 2-Year

U/M: Each



SURFACE.SOUND.

INDOOR / OUTDOOR SURFACE-MOUNT SPEAKERS

Our Adept Audio surface-mount loudspeakers are tough-as-nails and can be used for small to very large indoor or outdoor sound systems.

Their front ports and rugged woofers supply deep-bass that really projects. Plus, our long-throw aluminum tweeters really carry high frequencies over long distances.

Our impact-resistant ABS enclosures and rugged mounting brackets are built to look great year after year – whether they're in the harsh sun, drowning rain or the bitter cold.

And, our mounting bracket gives you a full range of swivel along the speaker's main axis, giving you flexibility needed to aim the speaker.

From commercial jobs to homes, there's an Adept Audio surface-mount speaker that's just right for your next job.





COMMERCIAL OR RESIDENTIAL

The Adept Audio IO80 can face any kind of challenge thrown at it. Need to drive a super-big indoor or outdoor installation? No problem. Thanks to our front-mounted, 70-volt adjustable tap transformer, you can mount the IO80 then configure it later without removing it.

The IO80's rugged 8" woofers can handle all kinds of power and its tuned slot pumps out enough low-end bass to get people bouncing. And our three-way design – with woofer, midrange and tweeter – delivers the sweet sound quality that rivals much more expensive, indoor-only audiophile speakers. For jobs where stealthy appearance is more important than ultra-powerful sound, we also offer our IO60 and IO50 surface-mount speakers. They might not be as big as the IO80, but they're just as tough and they sing the same sweet tunes.



IO80 B/W

8" 3-Way Surface-Mount Indoor/Outdoor Speakers

Superb speaker for high quality sound over a long distance, delivering clean, balanced, sound.

- 8" Injection-Molded Polypropylene Woofers
- 3" Injection-Molded Polypropylene midrange
- 1" Pivoting Aluminum-Dome Tweeters
- Power Handling: 150 Watts
- Frequency Response: 39Hz-20kHz
- Sensitivity: 91dB SPL, 1W/1m (3.3 ft)
- Impedance: 4Ω
- Taps: 70V/100V - 60W, 30W, 15W & 70V- 7.5W
- Dimensions: W 10¾" x H 15" x D 10"
- Black or White
- Warranty: Limited 5-Year

U/M: Pair



*Front-Mounted
70V/100V Tap for
Commercial Applications*



IO60 B/W

6½" Surface-Mount Indoor/Outdoor Speakers

Exceptionally good performer offering flatter and continuous sound dispersion horizontally and vertically.

- 6½" Injection-Molded Polypropylene Woofers
- 1" Pivoting Aluminum-Dome Tweeters
- Power Handling: 100 Watts
- Frequency Response: 45Hz-20kHz
- Sensitivity: 90dB SPL, 1W/1m (3.3 ft)
- Impedance: 8Ω
- Dimensions: W 9½" x H 12½" x D 8⅞"
- Black or White
- Warranty: Limited 5-Year

U/M: Pair



IO50 B/W

5¼" Surface-Mount Indoor/Outdoor Speakers

Natural sounding with excellent horizontal dispersion consistency & quality sound over large coverage areas.

- 5¼" Injection-Molded Polypropylene Woofers
- 1" Pivoting Aluminum-Dome Tweeters
- Power Handling: 75 Watts
- Frequency Response: 55Hz-20kHz
- Sensitivity: 89dB SPL, 1W/1m (3.3 ft)
- Impedance: 8Ω
- Dimensions: W 8⅜" x H 10⅝" x D 7½"
- Black or White
- Warranty: Limited 5-Year

U/M: Pair



BLEND. IN.

ROCK SPEAKERS

Our Rocks are built to take extreme temperatures, all the way from blazing desert heat to a moist nighttime chill in the deep tundra where you need products that are built literally like rocks. Adept Audio's 8-inch 2-Way Rocks are rugged performers that will deliver punchy, pure high fidelity sound for rocking poolside parties and relaxing in the evening after a full day on the job.

Adept's Rocks deliver rich sound that is both out-of-sight and out-of-mind. You'll feel it, but you'll be hard pressed to locate it amidst your landscaping. They are finished in realistic looking sandstone or granite to blend in with most every outdoor installation.

ROCK80 G/S

8" Rock Speakers

Sound that is heard not seen.

- 8" Injection-Molded Polypropylene Woofers
- 1" Aluminum Tweeters
- Power Handling: 60 Watts
- Frequency Response: 65Hz-20kHz
- Sensitivity: 90 dB SPL, 1W/1m (3.3 ft)
- Impedance: 8Ω
- Dimensions: W 10½" x H 13¾" x D 9¾"
- Granite or Sandstone
- Warranty: Limited 2-Year

U/M: Pair





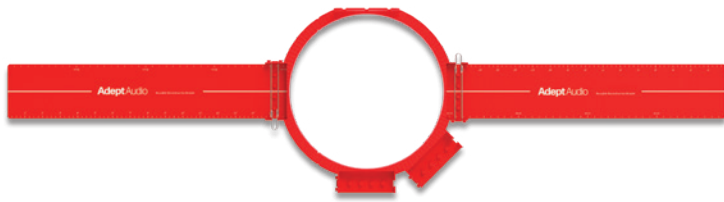
ACCESSORIES

Adept offers the key accessories installation pros rely on. Adept Accessories such as the reusable Pre-Construction Brackets are a money saver.

Designed to meet stringent building inspection demands, our Air Pressure Plate and UL Listed Fire Rated Metal Back Boxes are built so approval processes can proceed smoothly.

Adept's Volume Controls permit mix-and-match convenience on projects. It becomes one less issue for the installer as Adept's controls do the work to match impedances. Adept Accessories are designed to work in tandem with one another to help ensure seamless installation procedures.





ADEPTRBW

Reusable Ceiling Bracket

- Fits All Adept 6½" & 8" Ceiling Speakers
- Wing Span: Up to 24" On Center Max

U/M: Each

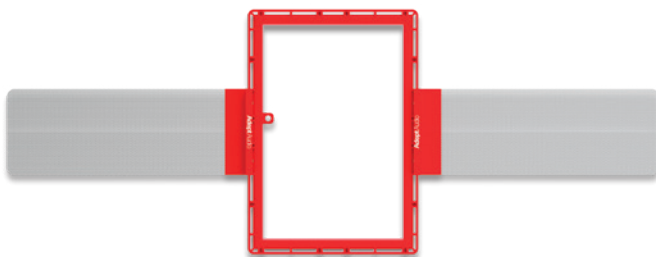


ADEPTWING

Replacement Wings For ADEPTRBW

- Fits ADEPTRBW Only
- Wing Span: 15" Each

U/M: Pair

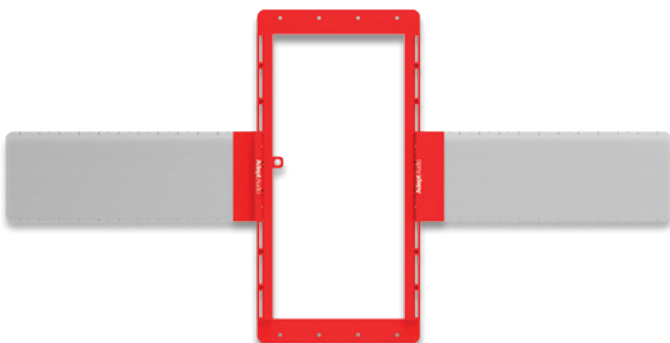


ADEPTIWBW

In-Wall Speaker Bracket

- Fits Adept IW62 In Wall Speaker
- Wing Span: Up to 24" On Center Max

U/M: Each



ADEPTDWBW

In-Wall LCR Speaker Bracket

- Fits Adept IWLCR56 & IWLCR66
- Wing Span: Up to 24" On Center Max

U/M: Each



ADEPTRG68

Trim-Rings w/Grilles

- Fits Adept Ceiling Speakers Only
- Package Includes Two Trim-Rings & Two Grilles

U/M: Package

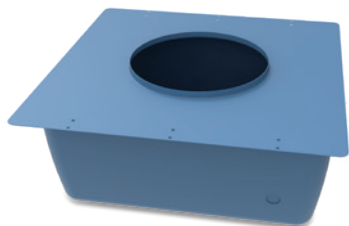


ADEPTPP68

Air Pressure Plate

- Fits Adept Ceiling Speaker Trim-Rings and ADEPTTR68

U/M: Each



ADEPTBB68

UL Listed Metal Back Box

- Fits Adept Ceiling Speakers Only
- Faceplate: H 18" x W 17¾"
- Speaker Box: H 17" x W 13¼" x D 8"
- Mounting Bars: H 25⅝" x W 1⅞"
 - Use when framing is greater than 16" on center

U/M: Each



ADEPTCSTB

Adept Ceiling Speaker Tile Bridge for T-Bar Ceilings

- Fits All Adept 6½" & 8" Ceiling Speakers
- Includes:
 - (1 each) Tile Bridge Bracket
 - (2 each) 24" Long Brackets
 - (4 each) Plastic Clips

U/M: Each



RVC100

Rotary 100W Volume Control

- Power Handling: 100 Watts RMS Per Channel
- Frequency Range: 20Hz-20kHz
- Total Attenuation: 42dB Max
- Impedance Matching: 1x, 2x, 4x, 8x
- Impedance Switch: Behind Front Plate
- Dimensions: W 1½" x H 2½" x D 2½"
- Includes: White, Bone & Almond Plates, Inserts & Knobs
- Warranty: Limited 2-Year

U/M: Each



SLVC100

Slider 100W Volume Control

- Power Handling: 100 Watts RMS Per Channel
- Frequency Range: 20Hz-20kHz
- Total Attenuation: 42dB Max
- Impedance Matching: 1x, 2x, 4x, 8x
- Impedance Switch: Behind Front Plate
- Dimensions: W 1½" x H 2½" x D 2½"
- Includes: White, Bone & Almond Plates, Inserts & Sliders
- Warranty: Limited 2-Year

U/M: Each



VC Shelf-Top Merchandising Tray

Red Litho-Lam Beauty Carton Tray

- Six volume controls per tray
- Each tray comes in a shipping box
- Six trays per master carton



UP. TWIST. CLICK. LOCK.

Adept Audio®

Innovation · Sonic Performance · Integrity

Jason (214) 578-2169 • Loren (951) 288-5085 • Keith (951) 288-0945
adept-audio.com • (888) 982-3378